



**Seckford Care**  
A tradition of quality since 1587

---

## Charges 2026 – 2027

### **Jubilee House Residential Home - fees**

Fully furnished, comfortable rooms with all-inclusive meals, laundry, social activities and 24-hour care.

- Privately funded residents - from £1,829.54 - £1,922.08 per week
- Publicly funded residents - Suffolk County Council rates

### **Extra Care Apartment - accommodation fees**

- Single apartment - rent from £125.08 - £131.08 per week plus Eligible service charge £123.99 and Ineligible service charge £41.61 per week.
- Double apartment - rent £149.31 per week plus Eligible service charge £123.99 and Ineligible service charge £58.53 per week.

### **Extra Care Apartment - care fees**

- Personal care charge - £32.75 per hour
- Well-being charge - £176.08 per week, per apartment\*

\*Includes 24/7 emergency call bell response, management and administration costs, and provision of a social activity programme.

### **Extra Care Apartment - additional support fees**

- Laundry and Housekeeping service - £19.35 per hour
- Maintenance service - £21.40 per hour
- Meals-on-Wheels are available 7 days a week - £8.80 per meal.



**Seckford Care**  
A tradition of quality since 1587

---

## Help to pay your care fees.

To find out if you qualify for financial help with your care fees, you can contact Suffolk County Council's Customer First Team on 0800 917 1109 who will:

- Assess your care needs and calculate how much money you require to meet your needs.
- Assess your income and capital to see if you qualify for funding. They will do this only after they have assessed your care needs.
- Fund all or part of your care costs if your income and savings fall below certain levels.





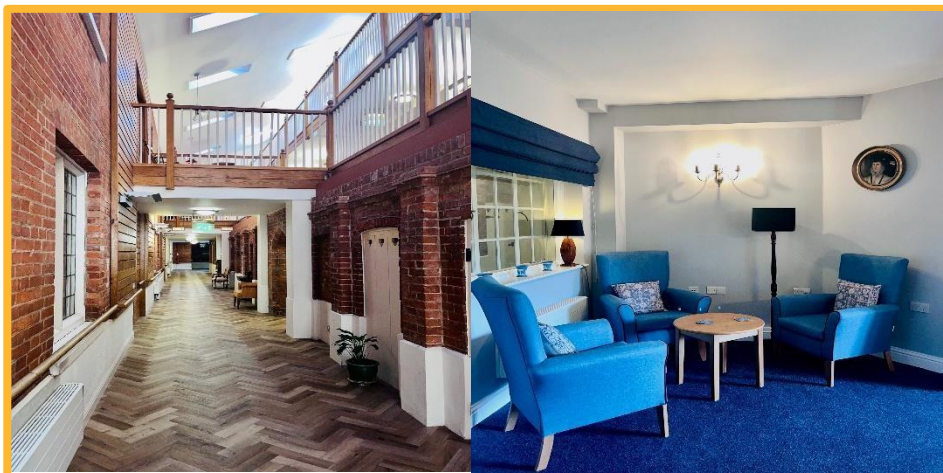
**Seckford Care**  
A tradition of quality since 1587

---

## Help to pay your accommodation fees.

To find out if you qualify for financial help (Housing Benefit and Council Tax Benefit) to help pay the rent and Council Tax on your Extra Care Apartment, you can contact East Suffolk Council on 0333 016 2000.

- Assess your income and capital to see if you qualify for funding.
- Fund all or part of your rent if your income and savings fall below certain levels.



## **The Terrace**

Self-contained single and double apartments for independent living with a daily wellbeing support visit.

- Rent from £115.85 - £150.00 per week plus Eligible service charge £15.24 and Ineligible service charge from £28.55 - £37.98 per week.
- Wellbeing support charge - £60.92 per week